

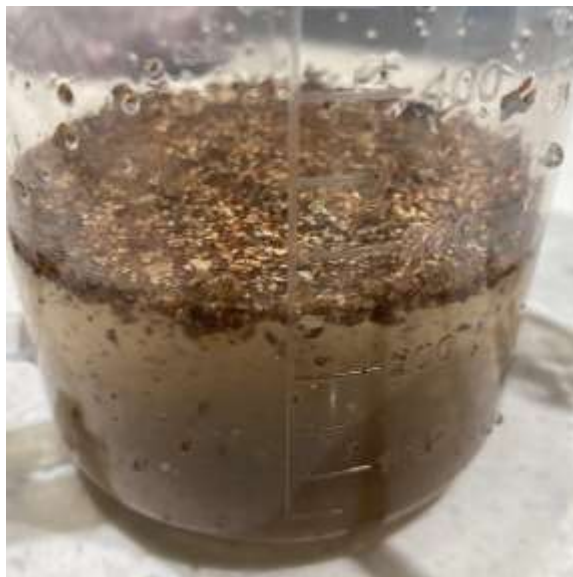
The Education University of Hong Kong

2021-2022 Quality Education Fund Thematic Network – Tertiary Institutes STEM Project Team

SCHOOL: SHA TIN PUBLIC SCHOOL (SPECIAL SCHOOL)

TOPIC: COMPARISON DIFFERENT MATERIALS FOR
WATER FILTER

污水(蛭石)



過濾

使用洗衣網盛載濾物



過濾後



綠豆



紅豆



紅腰豆

過濾後及建議濾物

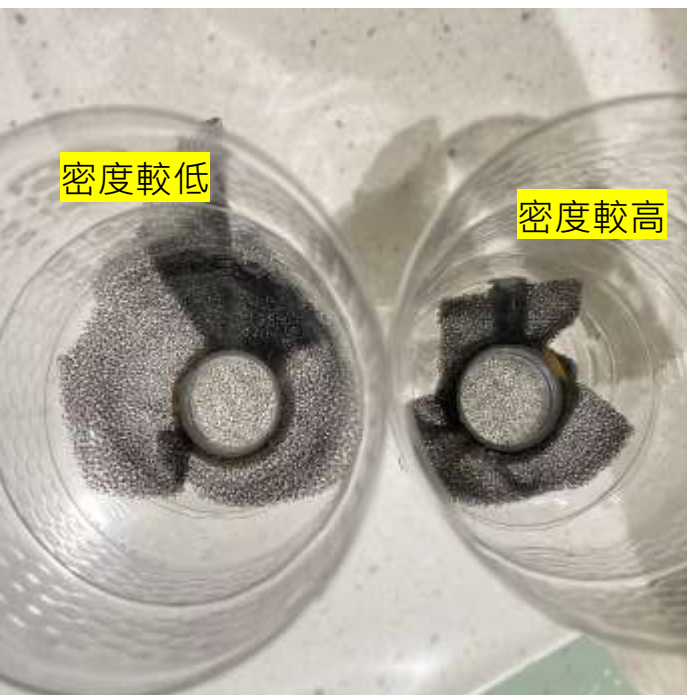


腰果



核桃

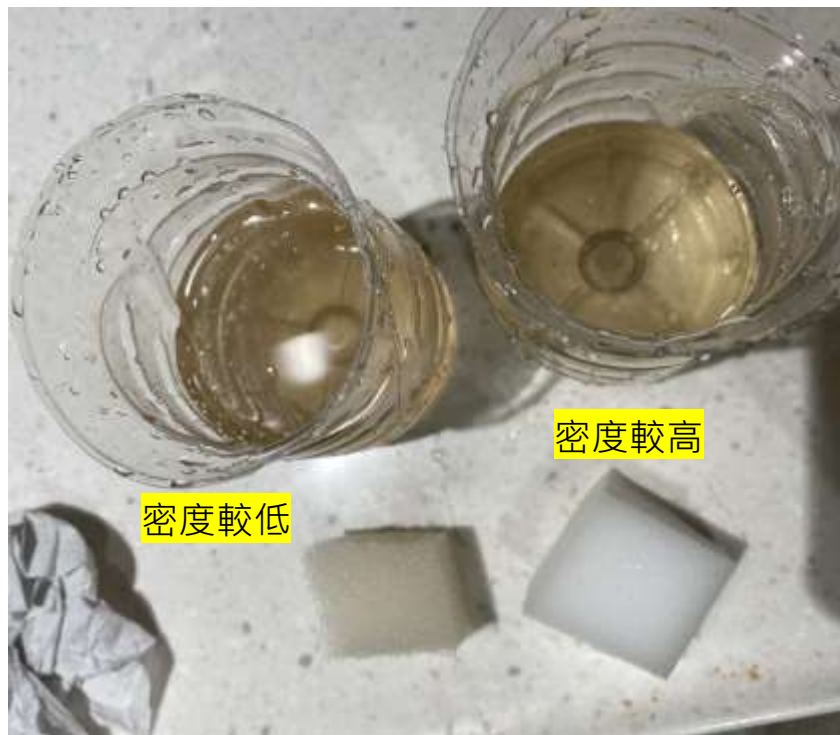
濾物：海棉



濾物：海棉



- 過濾的差別不太明顯



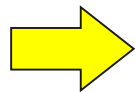
活性炭過濾

污水: Methylene blue (亞甲藍)

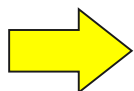
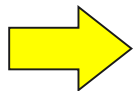
- 化學指示劑、染料



活性炭過濾（方法一）



加入活性炭後，進行攪拌



需要等候5-6小時

靜止等待



開始時 15滴(亞甲藍) 10滴(亞甲藍) 5滴(亞甲藍)



30分鐘後...



60分鐘後...

→ 分別加入5g 活性炭



1小時30分鐘後...



2小時後...



3小時後...



30分鐘後...

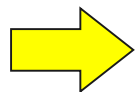


3小時後...

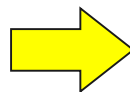
活性炭過濾（方法二）

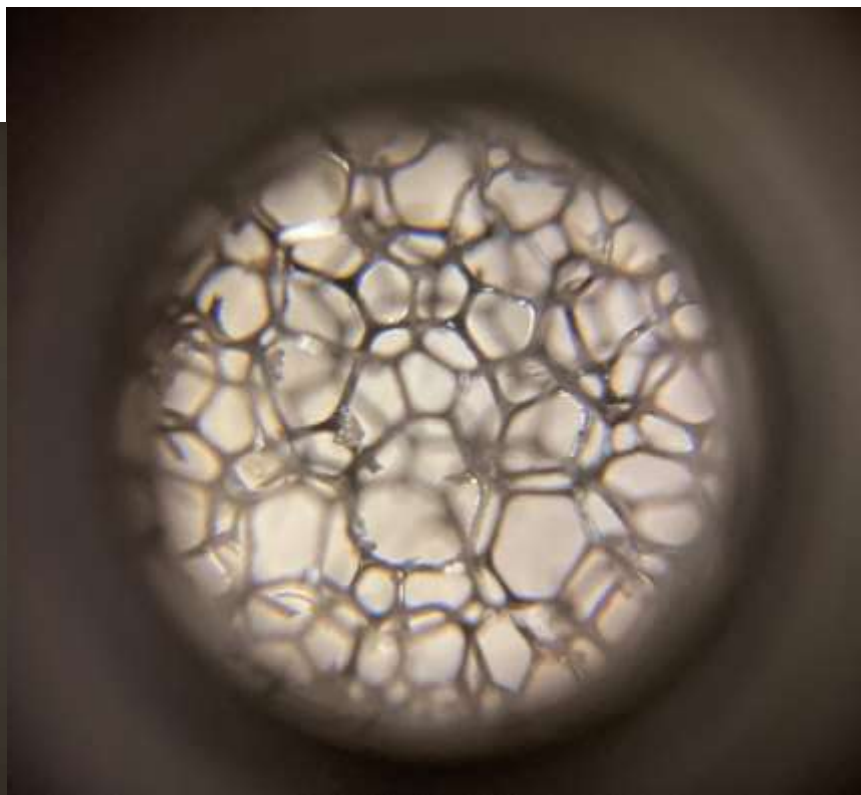
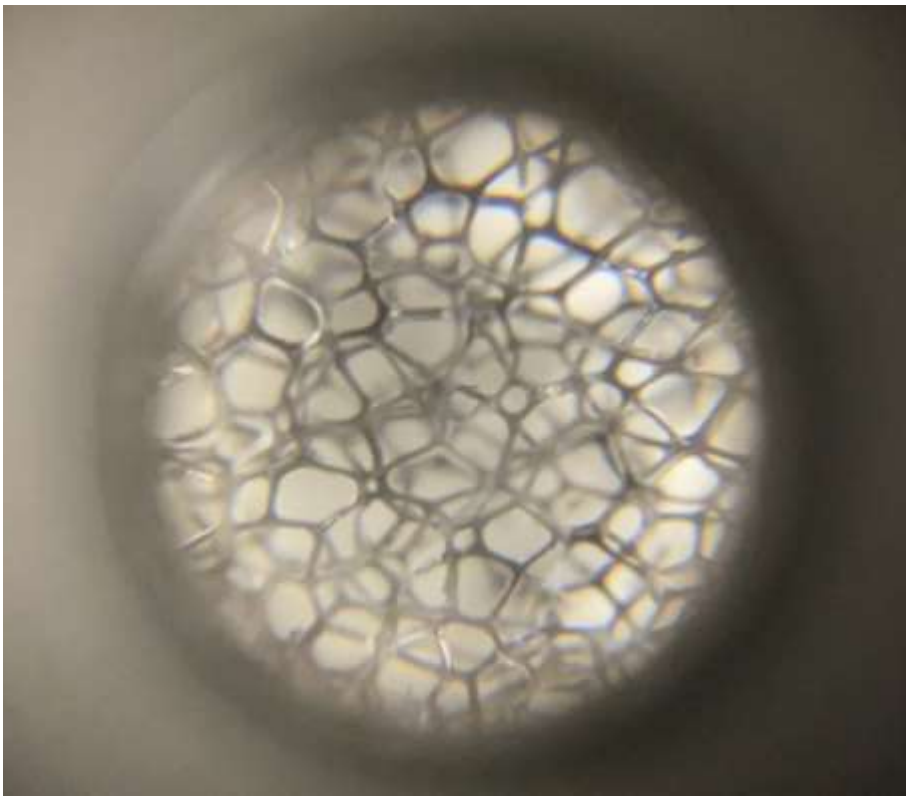


加入活性炭後，進行攪拌

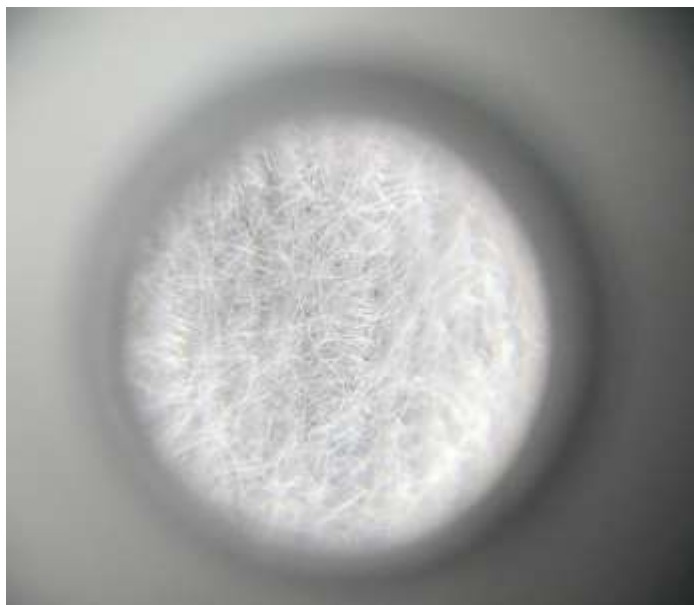


使用濾紙過濾活性炭





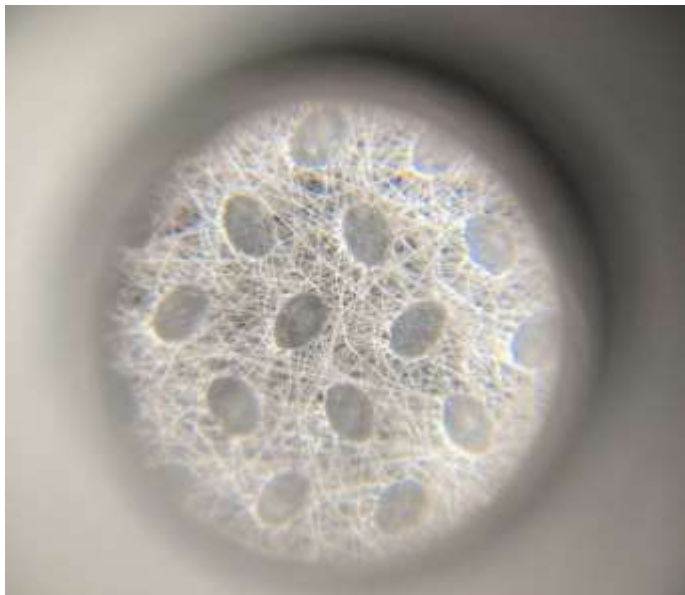
即棄洗面巾



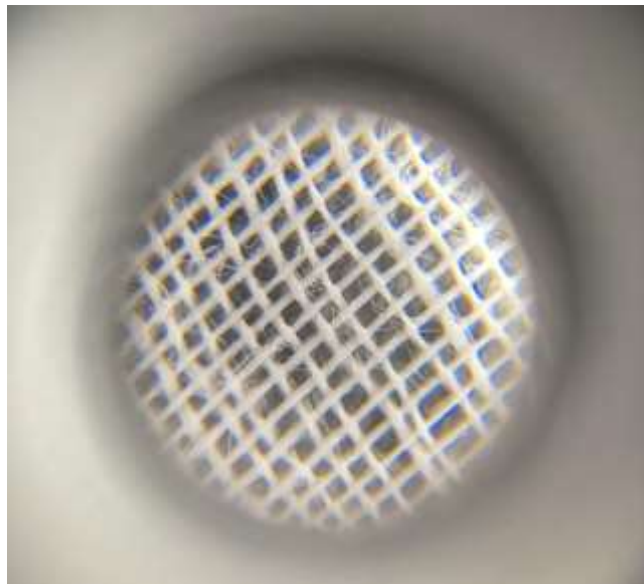
繃帶



茶包袋



豆漿袋/隔渣袋



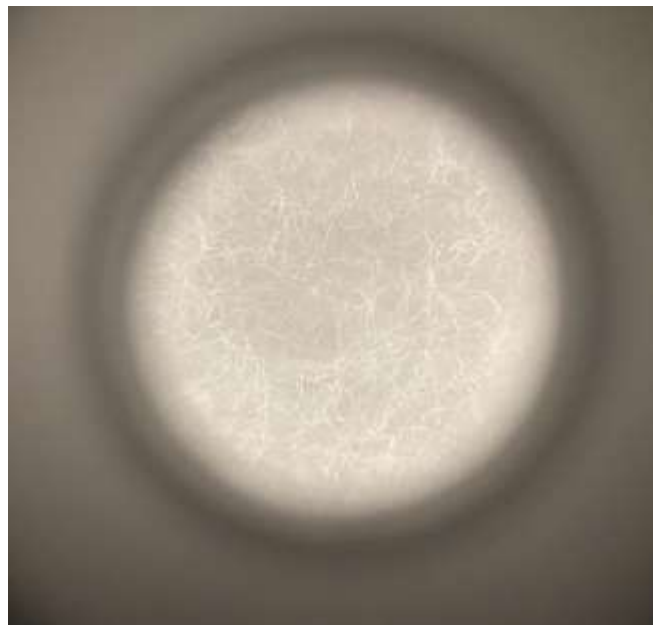
毛巾



藥用棉花



化妝棉



海棉

